



# Viking Voice

*A magazine for Lyndon Institute alumni,  
parents, and friends.*

Podgie Weissent, class of '39,  
and Ardell Mansfield, class of '39



Thompson Cottage, p. 27

**Head of School**

Twiladawn W. Perry '77

**Assistant Head for Curriculum & Instruction**

Adam Norwood

**Chief Financial Officer**

Meagan N. Howard '02

**Assistant Head for Campus Life**

Robert G. Heath Jr. '88

**Board of Trustees**

**President**

Lawrence V. Cipollone

**Vice President**

Loralee D. Tester '96

**Secretary**

Bretton J. Gale '77

**Treasurer**

David R. Hartwell '70

**Trustee At Large**

David J. Beattie '61

**Trustee At Large**

Meredith R. Feltus '87

Betsy Bailey '89

Heather Batalion '02

Laurie Boswell

Anthony Demasi

Larissa Flynn

T. Michael Flynn

James C. Gallagher '63

Barry Hertz

Peter C. Hopkins '74

Lorraine B. Impey '66

Stephen Maleski

Lorraine C. Matteis '65

Ryan J. McDonald '00

Amy B. McGarry '86

Emery J. Noyes '62

Ryan Noyes '93

Harwant Sethi Sr.

Patrick S. Seymour '15

Elaine A. Smith '63

Letter from the Head of School..... **3**

On Campus ..... **4**

Development ..... **8**

Faculty and Staff..... **26**

Thompson Cottage ..... **27**

Athletics ..... **28**

Class Notes ..... **30**

In Memoriam..... **34**

# Table Of Contents



# Lyndon INSTITUTE

## Viking Voice

Melissa A. Hall, Director of Development  
PO Box 127, 168 Institute Circle  
Lyndon Center, VT 05850

802-535-3773 fax 802-535-3767

LyndonInstitute.org

*It is the policy of Lyndon Institute not to discriminate on the basis of a student's or his/her family member's actual or perceived race, color, ancestry, national origin, creed, religion, gender, gender identity, sexual orientation, marital/civil union status, age, military/ uniformed service or veteran's status, disability, or other legally protected classification in the provision and administration of its educational programs, activities, services, and access provided to the public, in accordance with and to the limits of applicable requirements of state and federal laws. Lyndon Institute complies with the American Disabilities Act and Section 504 of the Rehabilitation Act of 1973, as well as other applicable state and federal laws with respect to accommodating individuals with disabilities. Lyndon Institute provides special education to eligible students in accordance with the School's special education approval from the State of Vermont, state and federal legal requirements, the School's policies and in coordination with the student's school district.*

*Lyndon Institute Viking Voice is published twice a year by the Development Office. We welcome submissions for publication and letters in response to articles. Please send submissions to Melissa Hall, Director of Development, Melissa.Hall@lyndoninstitute.org.*





## Dear Alumni and Friends of Lyndon Institute,

Welcome to the Fall 2019 Viking Voice. The Viking Voice is one of the ways that Lyndon Institute and its Alumni Association keep you informed of events and changes at your alma mater. While big changes and events are newsworthy and catch everyone's attention, many smaller changes occur unnoticed or remarked on. An example of this would be the change from mailing out thousands of paper Viking Voices, to the sending of them online. With so many people now following us on Facebook or other social media, we feel LI news will travel faster and further-reaching more people than the paper edition.

While this small shift to an electronic Viking Voice is a practical and pragmatic adjustment, it is indicative of how LI adjusts to the needs of both our and the wider community. Today's schools must prepare students for a future that does not exist yet. Our students will graduate into a world where AI is common – jobs are lost to robots and the nature of work is truly different. Our teachers work hard to engage their students in discussions that are more interactive; projects that are focused on skill development like teamwork, communication, and problem solving skills. A modern classroom must allow students to have more independence and flexibility in how they learn the skills to lead them to a diploma.

LI has a flexible pathway program (FLIP) that allows students to participate in internships and work based learning while working towards their diploma. Just recently, we have added online learning to the options students can choose. By January, students will be able to earn—with clearly defined paths and outcomes--their diploma through online classes.

While we have created more flexibility and choice for our students, we are also committed to maintaining our close community. Assembly remains a place to recognize personal achievements and share our hopes and dreams. We sing the Alma Mater and we cheer each other on during class competitions. LI is passionate about giving our students a sense of place and community. We also are working hard to stay connected to our wider community. We participated in the Stars and Stripes parade, the Caledonia Fair and the Burke Fall festival. We hope to see many of you on our campus and at our reunions. The LI community is as small as the classroom and as large as the world.

Lyndon Institute's mission is to inspire students to be accomplished learners, creative thinkers and compassionate community members. These small changes can subtly change the culture and feel of the school.

Sincerely,

Twiladawn W. Perry, '77  
Head of School

## Student Ownership For the Viking Voice

Thank you for reading. We would like to take this opportunity to remind our readers that the Viking Voice magazine design is now completed in-house. Mrs. Bridget Atkins, LI Graphic Arts Teacher along with her advanced graphic design students are responsible for the visual presentation and flow of material in the issue you are now reading. Mr. Dick McCarthy, Dean of Faculty and Humanities teacher as well as his English Honors students were also involved in this issue, having a role in the proofreading piece of production.

These changes allow Lyndon Institute students to have real world experience in production of a professional publication. It also allows for a greater student voice within the content of our magazine produced for alumni, parents and friends to enjoy.

Additionally, we have gone green with the publication by reaching the majority of our readers digitally. If you would like to request a hard copy be mailed to you, please reach out to Alumni Coordinator, Heather Wheeler at 802-535-3772 or [heather.wheeler@lyndoninstitute.org](mailto:heather.wheeler@lyndoninstitute.org).

We hope that you appreciate the school wanting this important piece of our communications to be student driven. If you would like to share comments or suggestions, please contact Melissa Hall, Director of Development at [Melissa.hall@lyndoninstitute.org](mailto:Melissa.hall@lyndoninstitute.org) or 802-535-3773.



Main Building



## Lyndon Institute Class of 2019 Valedictorian and Salutatorian

The valedictorian of the graduating class at Lyndon Institute is awarded to the student who receives the highest weighted grade point average during their tenure at the school. The student to realize that accomplishment for the Class of 2019 was Connor McClure. In his role as valedictorian, Connor presented the valedictory address during the school's Commencement ceremonies in June.

The salutatorian for the graduating class is awarded to the student who receives the second-highest weighted grade point average during their tenure at the school. The student to realize this accomplishment for the Class of 2019 was Abigail Ham. She presented the Commencement invocation address during the Baccalaureate ceremonies in June.

Head of School Twiladawn Perry said, "We are incredibly proud of the accomplishments of both Connor and Abigail. Both of these students not only dedicated themselves to academic excellence but have embraced and excelled in numerous other opportunities throughout their high school careers. By doing so, they have set an ambitious example for their classmates. Congratulations, Connor and Abigail!"



Lyndon Institute Class of 2019 Valedictorian,  
Connor McClure



Lyndon Institute Class of 2019 Salutatorian,  
Abigail Ham



## H.O.P.E. Donates 100 Backpacks to Lyndon Institute



Lyndon Institute recently received a donation of 100 backpacks from H.O.P.E. which will be given to students who express the need for a new backpack.

Lyndon Institute received a donation of 100 backpacks on August 20, 2019, from H.O.P.E (Helping Other People Everyday). H.O.P.E operates a thrift store in Lyndonville, VT to help fund its mission to provide basic services to people in need in the local community. H.O.P.E. and LI have worked closely over the years to provide their students with clothing and other basic necessities when needed.

Initially, H.O.P.E. was the recipient of 3,000 backpacks from the Tender Corporation who is based out of Littleton, NH. Yvette O'Connor reached out to Lyndon Institute Counselor Bobbi Warner Somers on behalf of H.O.P.E. to facilitate the donation to LI.

## Lyndon Institute Held Cruise Into Fall Auto Cruise-In



The 2019 Cruise Into Fall auto cruise-in was held on the Mathewson (Matty) Green on our lower campus on Saturday, September 7th. Close to two dozen hot rods and classic cars were on display.

Seeing an opportunity to bring the community together, Lyndon Institute held it's first-ever 2019 Cruise Into Fall auto cruise-in. This free admission event was held on LI's Matty Green and open to the public.

Aside from the various automobiles that were on display, there were other attractions at the family-friendly event that included a bouncy house, food trucks, musical entertainment provided by DJ Scavitto, and a varsity football game.



## Lacrosse to Become a Club Sport at Lyndon Institute



Lyndon Institute Athletics enthusiastically announced that beginning in the Spring of 2020 club lacrosse will be added to its programming with the goal of becoming a Varsity sport after two years as a club sport.

The inaugural Club Lacrosse teams, girls and boys, will be led by Rebecca Lowe, Judd Levine, and CJ Mackinnon, who are all accomplished in the sport. Coach Lowe played women’s lacrosse at the University of Maryland and won three national championships. Coach Levine played men’s lacrosse at Curry College and has coached in Vermont and Massachusetts, while Coach Mackinnon played at Springfield College.

With this change in the athletic programming, current varsity-level sport, Ultimate Frisbee, will become a club sport and maintain some but not all of its past schedules.

**For more information please contact the LI Athletic Department and Director of Athletics and Activities, Eric Berry.**

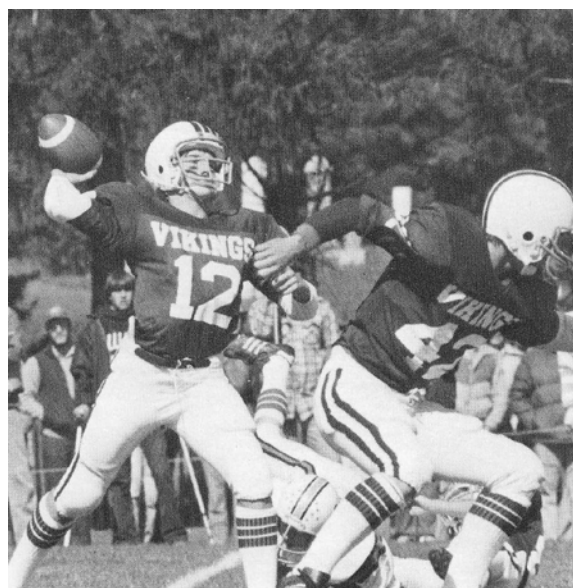
## Lyndon Institute Announces Athletic Hall of Fame

With much of its more than 150-year history steeped in athletic tradition, Lyndon Institute is proud to announce the roll-out of an Athletic Hall of Fame. Eric Berry, Director of Athletics, is excited that Lyndon will recognize great athletes, coaches, teams, alumni, and friends who have meant so much to LI’s storied past. “I have been a member of the Lyndon State College Hall of Fame Committee for over a decade and have seen the excitement that goes with bringing great athletes, coaches, and teams back to campus. I am so excited that legendary Vikings will be forever remembered in our newly founded Hall of Fame.”

Berry mentioned some of the guidelines for nomination and induction. Hall nominees will have made a significant impact on LI athletics; have been recognized locally, regionally, state-wide, and even nationally; represent the highest values of our school and athletic program (character, leadership, and dedication); and exemplify the values set forth in our Code of Respect and Responsibility.

Hall of Fame coaches will have dedicated many years to the LI athletic program; made a significant impact within the culture of the school; is a person of stellar character who has greatly impacted the lives of many students through leadership and example on and off the field.

Athletes, coaches, and teams may be nominated posthumously and LI plans its first Hall of Fame banquet and induction ceremony in 2020. Nominations forms are available on LI’s website at: [www.lyndoninstitute.org/athletics/athletic-hall-of-fame](http://www.lyndoninstitute.org/athletics/athletic-hall-of-fame)



Lyndon Institute recently announced the roll-out of their Athletic Hall of Fame with the first banquet and induction ceremony scheduled for 2020.



# Lyndon Institute Names Eric Berry As New Athletics And Activities Director



**Eric Berry was hired as the new Athletics and Activities Director. He replaces Paul Wheeler who was in the role for 16 years.**

Lyndon Institute Head of School, Twila Perry announced that Eric Berry had been named the school’s new Athletics and Activities Director. Starting last July 2019, he replaced Paul Wheeler, who retired after serving as LI’s Athletics Director for 16 years and reports to Rob Heath, Assistant Head for Campus Life.

Berry’s extensive 30-year career in the field of athletics and broadcasting began when he was a student at Lyndon Institute. He lettered in varsity football, basketball, and baseball, and graduated in 1985. He went on to attend Lyndon State College and received a B.S. in Interdisciplinary Communications and Physical Education in 1990.

“I am honored to be selected as the next Athletics and Activities Director for Lyndon Institute,” said Berry. “As everyone knows, I have been a lifelong fan of the Vikings since my days as a student-athlete at LI and as a coach for their boys and girls varsity basketball programs. I hope to continue the athletic legacy of LI, its great traditions, and enhance the opportunities for current and future student-athletes. I also want to thank the members of the selection committee, Head of School Twila Perry, Adam Norwood, Rob Heath, and the entire NEK community who helped to prepare me for this opportunity.”

In his new role, Berry will provide comprehensive oversight and coordination of the athletics and extracurricular programs at LI. This includes all athletic event scheduling, transportation, policy compliance, facilities use, coaching and coaching certifications, Title IX compliance, representation of LI at state- and national-level meetings (VPA, NVAC, VSADA), and a host of other requirements relating to physical education.

Berry lives in Lyndonville with his wife Meridith (LI Class of '92), and his daughter, Jade (LI Class of 2018), and son, Camden (Class of 2023).

## Stay Connected with LI



KEEP UP WITH CAMPUS NEWS  
Search Lyndon Institute



VIEW OR BUY PHOTOS AT  
[LyndonInstitute.SmugMug.com](http://LyndonInstitute.SmugMug.com)



THE LATEST  
NEWS AND SPORTS  
[Twitter.com/LyndonInstitute](https://Twitter.com/LyndonInstitute)

# Development

## Remember This?



Does anyone recognize the young cheerleader in this photo from the 1968 LI-St. J game? Diane (Bennett) Lynch '69 and Mary Mallon '70 are looking on

## Previous Issue



The "mystery" batter in the photo on page 11 of the Spring 2019 issue of Viking Voice is Sharon Goodwin Emery...Class of '70.

Thank you Mickey (Sanderson) Richards '71 for helping to identify the picture.

## Alumni Regional Events 2019-2020

October 18 – Viking Pride Social at the Lyndonville  
VFW 7:30 p.m.

April (TBD) – Sugar House and Alumni Museum  
Open House at LI

December 13 – Burlington Social at Hotel Vermont.  
6:00-8:00 p.m.

June 5 – 11th Annual Independence Fund Golf  
Tournament

December TBA – Alumni Basketball Game - contact  
the alumni office if you are interested in playing.

June 5-7 – Alumni Weekend

January/February TBA - Alumni Hockey Game

July – Stars & Stripes Parade

March 28, 2020 – Orlando, FL New location

September (TBD)– 2nd Annual Cruise Into Fall  
on Matty Green

\* We will be traveling to Arizona this spring, if you are interested in connecting please email Melissa Hall, Director of Development at [melissa.hall@lyndoninstitute.org](mailto:melissa.hall@lyndoninstitute.org)



# 2019 Distinguished Alumni Award

The Distinguished Alumni Award was established to honor those individuals who have rendered meritorious service to the community, the nation, the school or who has achieved outstanding distinction in a profession or business. The 2019 Award was presented on Alumni weekend to two individuals who fit the criteria on multiple levels.

David Beattie grew up in Lyndonville, attended Lyndonville Grade School and Lyndon Institute, graduating with the class of 1961. He graduated from Dartmouth College in 1965 with a major in Engineering Science. In 1966, he graduated from Thayer School of Engineering, an associated school of Dartmouth College, and was commissioned as an ensign through the Navy ROTC program. After completing nuclear power and submarine training, David served in two ballistic missile submarines, two attack submarines, including five years as commanding officer of the USS Jack (SSN 605), and on two submarine related staffs. Following the completion of his naval service in 1986, he was engaged in several engineering related occupations, including 17 years as Quality Manager at Lawrence Pumps Inc., where he managed initial and continuing certification of the company's quality system to international standard ISO 9001. He retired from Lawrence Pumps in 2008. He is a retired licensed professional engineer in Maine, New Hampshire, and Vermont.



Susan Pasell Beattie grew up in Dartmouth, Massachusetts, and moved with her family to Lyndon Center in 1962. She graduated from Lyndon Institute with the class of 1963, attended Lyndon State College, and graduated from the University of Vermont in 1969 with a major in nutrition science, followed by a dietetic internship at Beth Israel Hospital in Boston. She worked as a registered dietitian in the hospital setting until she became a full time mother of two children. As the children were nearing completion of their education, Susan returned to college and received a Masters in Education degree from the University of New Hampshire. She taught third grade in Berwick, Maine for 17 years, and retired from teaching in 2006.



Dave serves on the Lyndon Institute Board of Trustees as a member at large of the Executive Committee. Sue serves as a Corporator of Lyndon Institute. Both contribute to Lyndon Institute in numerous ways and are seen on campus so often they could easily be mistaken for residents!

It is with great honor that we celebrate Dave and Sue as the recipients of the 2019 Distinguished Alumni Award.

# YOU + LI = A GREAT PAIR

**Becoming a Sustaining Member** is an easy way to increase the power of your support and put more of your dollars into the programs you believe in. As a Sustaining Member, you will save time, money, and resources! A Sustaining Membership is a monthly gift that you can pay in a convenient, ongoing way. Each month, we will charge your credit or debit card the amount you specify. Your Sustaining Membership will automatically continue unless you choose to cancel or change it.

Sustaining membership gifts can be made in any reoccurring amount. Below is a sample schedule illustrating what your annual gift to the school breaks down to per month.

## Sample Sustaining Membership Gifts:

<i>Annual Gift</i>	<i>Amount charged to your card per month</i>
\$75	(\$6.25 per month)
\$120	(\$10 per month)
\$300	(\$25 per month)
\$1,200	(\$100 per month)
\$2,400	(\$200 per month)
\$4,800	(\$400 per month)



## Sustainer Benefits:

**Automatic sweepstakes entry** into a drawing for a big prize held in June.

**Thank-you gifts** – one per year based on giving amount (minimum gift of \$75). The gift for 2019 is a pair of limited edition LI branded socks.

**Event access** – special parking (level dependent) & free admission to LI performances and home athletic events

**Uninterrupted membership**—automatically receive a new Member card annually

**Annual tax receipt** each January, documenting cumulative gifts for the year

**Reduced mail** – no additional renewal notices

**Young Alumni Society** – Alumni who graduated from LI within the last 10 years are eligible for top level benefits with a minimum annual gift of \$75 (\$6.25 per month). This offer is available until your 10th alumni class reunion. Take advantage of this special offer and stay connected with your alma mater.

## Sustainer FAQs:

### Q: What does it mean to be a monthly Sustainer?

A: Monthly Sustainers give on an ongoing basis, and their donation is automatically billed each month until we are instructed to stop. Sustainers also receive a Member card each year.

### Q: As a Sustainer, am I entered into sweepstakes?

A: Yes, you are automatically entered into LI's annual sweepstakes to be held in June.

### Q: Am I eligible for thank you gifts?

A: Yes. You are eligible to receive thank-you gifts offered based on your pledge level.

### Q: How do I set up my monthly recurring donations?

A: Go online to: <https://www.lyndoninstitute.org/support-li/give-online/give-monthly-form> or call the Development Office for assistance at 802-535-3773.

### Q: How can I cancel my sustaining pledge?

A: You can change or cancel your sustaining pledge at any time. Simply call the Lyndon Institute Development Office, Melissa Hall, Director of Development at 802-535-3773.

## Event Access Benefit Levels:

<b>Sustaining Member Annual Gift</b>	<b>Benefit</b>
\$300-\$1,000	Admission to LI theater performances
\$1,000 - \$2,400	All access card: athletic & theater performances
\$2,400 & above	All access card plus reserved parking



## Letter From Alumni President Tim Kirchoff

**President:**

Timothy L. Kirchoff '96

**Vice President:**

Michael D. Matteis '89

**Treasurer:**

Jeff T. O'Meara '04

**Clerk of the Corporation:**

Heather (Root) Wheeler '90

**BOARD OF TRUSTEES****Board Members:**

Lindsay (Jones) Carpenter '02

Candace E. Dane '74

Paula (Graves) Gaskin '71

Kathy (Bassett) Newland '67

Sherry (Ronan) Noyes '63

Kathy (Hevey) Pelow '82

Kathy (Jackson) Smith '93

Paul E. Wheeler '74

**Lifetime Members:**

Dwight A. Davis '50

Gertrude Angell Grant '49

Norman A. Legge '56

Shirley Beane Pierce '53

**Viking Voice Contributors:**

Bridget Atkins

Eric Berry, '85

Melissa (Boulay) Hall '92

Timothy L. Kirchoff '96

Javin Leonard

Richard McCarthy

Twiladawn (Wakefield) Perry '77

Cassidy Sherman '20

Heather (Root) Wheeler '90

David Stahler, Jr. '90

**Graphic Design:**

Emily Sherman, 20'

Lead Designer

Autumn Dunbar, 20'

Junior Designer

Kya Sigouin, 20'

Junior Designer

Jarrett Petterson, 20'

Junior Designer

**Viking Voice Photography:**

Timothy L. Kirchoff '96

Javin Leonard



Greetings Alumni and Friends of Lyndon Institute,

Another school year has begun and the bustle of activity around Lyndon Institute is again exciting to see. From early morning class changes to late afternoon athletic teams heading to the locker room after an exhausting practice; it brings me back to the days of walking around campus breathing in the cool fall air.

Alumni Weekend this past Spring was, as always, so much fun. The all class social was very well attended. Personally, I was actually able to play in the Alumni Golf Tournament for the first time which made me realize that taking 4 years off between rounds of golf is not conducive to low scores. I still had a blast playing with a great group. We took all of our lost balls (mostly!) in stride. I want to send out a big "Thank You" to all those that put in a lot of hours organizing the many pieces that makes this important weekend possible every year.

The Alumni Association has been working on some plans to make this coming Alumni Weekend even more fun. We will be releasing more information on activities to class secretaries later this year. If your graduation year ends with a "0" or a "5", this is a reminder that this is YOUR year for a reunion. Please keep an eye out for reunion information from your class secretary or watch for information on LIAA social media for updates.

This year, look forward to more Alumni sporting events throughout the year. We plan to host a 7th annual Alumni hockey game as well as games for a few other sports. We love to see alumni come back and participate in these events. To make it even more fun, try to get a group of former teammates together and see if some of that on field/court chemistry is still there.

The LIAA wants to wish one of its board members, Paul Wheeler, a happy retirement. As many have likely already heard, Paul retired from his long time position as Athletic Director at Lyndon Institute. We hope Paul enjoys retirement and look forward to seeing him at our LIAA meetings and other Alumni events.

With the retirement of Paul, the LIAA wants to welcome, Eric Berry ('85), as Lyndon Institute's new Athletic Director. Eric has been very active in athletics throughout the community since his graduation from LI. We feel Eric will make a great AD. In related news, Eric is launching the Lyndon Institute Athletics Hall of Fame. Over the next year, the Hall of Fame committee will be working hard to go through nominations and put together a great inaugural class. The LIAA is excited to support this project and hope to see many alumni turn out for the inauguration events.

The LIAA and Lyndon Institute would like to remind everyone that the Viking Voice has gone digital. However, I want to reiterate that it is possible to continue receiving a hard copy printed version of the Viking Voice in your mailbox. Please contact the LI Development Office, or the LIAA to confirm your name and address and a hard copy of the Viking Voice sent to you. If you hear any alumni asking why they are no longer receiving the Viking Voice, please let them know how they can still get one.

As always, I would also like to thank the LIAA Board and Heather Wheeler for all their hard work and collaboration. I'm looking forward to planning events for this coming year.

Go Vikings!

A handwritten signature in black ink that reads "Tim Kirchoff". The signature is written in a cursive, slightly slanted style.

Tim Kirchoff '96  
LIAA President

# Alumni Weekend 2019



## THANK YOU

Alumni Weekend 2019 kicked off to a wonderful start as more than 300 alumni, friends and family gathered at the All-Class Social at the Burke Mountain Hotel and Conference Center. More than 150 alumni and their family members joined their classes under the commencement tent on Saturday for the alumni cookout and indulged in conversation and good food. We foresee a few changes for the next alumni weekend and the class secretaries and reunion organizers will contact those classes ending in 0's and 5's who will be celebrating reunions next year. Save the first weekend in June (June 5th -7th ) for celebrating alumni weekend in 2020.

-Your Alumni Association Board of Directors

Save the Date!  
Save the date for  
your reunion  
weekend in 2020!  
Friday, June 5th-  
Sunday, June 7th









# Alumni Weekend 2019

## Class of '39 - 80th Reunion



Eleanor "Podgie" (Blair) Weissant and Ardell (Allard) Mansfield

## Class of '44 - 75th Reunion



Annabelle (Masure) Hodges

## Class of '49 - 70th Reunion



Lois (Field) White and Charles Bull

## Class of '54 - 65th Reunion



**Front center:** Lorraine (Cox) Bedor, Ann (Ruggles) Fassett, Beverly (Stowell) Whipple **Left to right:** Marion (Randall) Dane, Gladys (John) Batchelder, Gloria (Nugent) Simms, Bob Cain '55, Laura Cain, Durwood Wheeler, Mary Ann (Greenwood) Dennis, Clark Cady, Tom Kerr, Elsie (Easterbooks) Lawrence '62, Bob Lawrence

## Class of '59 - 60th Reunion



**Front row:** Sherry (Gilman) Hall, Janice (Hunter) Somers, Ruth (Blake) Welch, Annie (Williams) Meyette, Ruth (Cross) Cole, Arlene (Bandy) Stone, Ken Miller, Leora (Thompson) Dunphy, Bonnie (Phelps) Blanchard, Sherry (Lynch) Bowers, Russ Simpson **Back row:** Don Lang, Gloria (Kilpatrick) Hancock, Janet (Bailey) Smith, Kayleen (Flood) Stowell, Ramona (Poulin) Mann, Dave Hill, Tim Grant, Art Taylor, Kenneth "Sam" Sanderson, Erton Hudson, Ron Dunphy, Lyndol Chester

## Class of '64 - 55th Reunion



**Front row:** Ken Leach, Marti (Pasell) Ross, Nadine (Bennett) McCue, Lorraine (Donaldson) Bickford, Jean (Mitchem) Desrochers, Carol (Ashton) Griffith, Jeanne (Ackley) Elliott, Judy (Flood) Gilman, Charlotte (Doyon) Simpson, Joan (Curtis) Todd **Back row:** Wanita (Gorham) Gardner, Jim Ross, Pat (King) Richmond, Carol (Bennett) Pilette, Janice (Dutton) Gendreau, Norma (Grant) Metz, Merritt Vantine, Joe Buzzi, Anne (Morrissette) Brown, Joe Welch





**Front (L-R):** Michael Michaud, Rachel (Laramee) Howland, Crystel (Larabee) McFarland, Jennie (Switser) Dion, Faith (Gaskell) Hunt, Bonnie Cassady, Sandra (Rexford) Ingerson, Patricia (Gordon) Crocker, Kathy (Houghton) Simpson, Marcia (Wilkins) Rainey, Vickie Jenkins, Marcia (Sears) Woodall, Bonnie (Brill) Boucher, Shawna (Bailey) Wilkerson, Judy (Niles) Emerson, Rhoda (Deos) Weed **Back (L-R):** Don Gardner, Rick Gorham, Chuck Smith, Fred Gorham, Nelson Charron, Jim Ramsdell, Doug Chatman, Andy Deos, Doug Rainey, Jerry Welch, Robbie McClure, Donna Fox, Patsy (Nelson) Whitcomb, Phil Taylor **Also Attended:** Howard Birchard, Charlie McQuade, Andrea (Davis) Kupetz



Class of '74 - 45th Reunion



**Front row:** Donna (Charron) McFarland, Mark Beattie, Brenda (Densmore) Gale, Mike Garcia, Delores (Charron) Towle, Alice (Taylor) Douse, Darlene (Brown) Pilbin, Rick Elliott **Back Row:** Morris Hubbard, Paul Wheeler, Dianna (Barrett) Simpson, Jeffrey L. Leonard, John Sylvester, Andi Dawson, Kathy (Lussier) Pearl, Wendy (Wakefield) Beattie, Gwen Bishop, Karen (Zaun) Kennedy, Greg Frederick, Gail (McKay) Brooks, Randy Amadon, Jim Fox

Class of '79 - 40th Reunion



**Front row:** Conni Franz, Mike John, Laura (Dangel) Shaw, Tina Christophersen **Middle row:** Karen (St. Pierre) Manning, John Vinton, Shari (Beattie) Austin, Mitch Gaboriault, Sheryl (Beattie) Cota, Brad Before, Merrilee (Jesseman) Blair, Dan Lay, Lisa Goodwin, Charlie Somers **Back row:** Jeff Powers, Tim Chippeo, Tami (Burnham) Jones, Mike Wheeler, the late Tony Greenwood, Wade Noyes, Dave Johnson, Russell Berry

Class of '84 - 35th Reunion



**Sitting:** Traci McDowell **Left to right:** Bethany (Grant) Thompson, Stephanie (Taylor) Mitchell, Bryan Fenn, Shelly (Mitchell) Shufelt, Kelly Bean, Michelle Hagman, Karen Fleming, Lorna Young, David Lay, Michael Moffatt **Standing in back row:** Sally (Patridge) Carr, Larry Masure





**Class of '89 - 30th Reunion**

**Above, left to right:** Brian Hilliard, Desiree Hertz, Ginger (Haskell) Clayton, Beth Ford, Shawn Tester, Karen (Gallagher) Stimpson, Aaren James, Jen Gould, Tani (Townsend) Rainey, Sonya (Boulay) Carr, Tonja (Gochie) Jardine

**Right, left to right, front row:** Calley (Christman) Hanks, Angela (Cross) Gaskin, Tanja (Gochie) Jardine, Sonya (Boulay) Carr, Karen (Gallagher) Stimpson, Sara (Jewell) Foster, Desiree Hertz, Ginger (Haskell) Clayton

**Back row:** Betsy Bailey, Brad Grant, Aaren James, Shelly (Degreenia) Smith, Gene Before, Jason Prendergast, Aric Steen, Mike Matteis



**Class of '94 - 25th Reunion**

**Left to right:** Nikki (Buzzi) Bigelow, Toby Lussier, Tara (McCaffrey) Prue, Scott Stenson, Glen Jardine, Emily (Handley) Hatch, Chris Norway, Cathy (Gorham) Coute



**Class of '99 - 20th Reunion**

**Left to right:** Greg Chamberlain, Krystal (Simpson) Renaudette, Stephanie (Spaulding) Dwyer, Denise (Carreau) Montgomery, Lauren (Godfrey) Chamberlin, Germaine Murphy, Susan (Switzer) Moore **Standing:** TJ Tanner, Carrie (Norway) Wilton



**Class of '99 - 20th Reunion**

**Front row:** Denise (Carreau) Montgomery, Alivia (Bertolini) Libby, Robyn (Lotspeich) Costa **Back row:** Becky (Johnson) Carroll, Holly Simpson, Kiomi (Yount) Mumford



**Class of '04 - 15th Reunion**

**Sitting:** Mandy (Mitchell) Chapman, Josh Fournier **Left to right:** Heidi (Wheeler) Choiniere, Michelle French, Caitlin Gilman, Jeff O'Meara

## Stay Connected with LI



KEEP UP WITH CAMPUS NEWS  
Search Lyndon Institute



VIEW OR BUY PHOTOS AT  
[LyndonInstitute.SmugMug.com](http://LyndonInstitute.SmugMug.com)



THE LATEST NEWS AND SPORTS  
[Twitter.com/LyndonInstitute](https://twitter.com/LyndonInstitute)



## Class of '09 - 10th Reunion



**Sitting:** Nykea Williams, James Watkins, Amanda Gochie **Left to right:** Gabrielle (Mathewson) Bourassa, Katrina Seymour, Autumn Lund, Dylan Goodwin, Lindsey Scelza, Will Garfield, Brennan Parker, Zach Fournier

# Call for Art!

Lyndon Institute is thrilled to announce that the Visual Art Department in collaboration with the Satellite Gallery in Lyndonville, will host an Alumni Art Exhibit from June 1- June 27, 2020. Art will be displayed in the beautiful new Satellite Gallery located at 71 Depot Street. We are now seeking alumni to submit work for this year's Exhibit.

All types of artwork are welcome! The first step is to submit your work digitally by emailing the following: 1) photograph of each piece you plan to exhibit with a description of the medium 2) your contact information, 3) the size of the framed work. All submissions should be emailed to Cynthia Helmbreck, Lyndon Institute Visual Arts Instructor: [cynthia.helmbreck@lyndoninstitute.org](mailto:cynthia.helmbreck@lyndoninstitute.org).

All pieces must be wired, framed, or otherwise ready for installation by May 22, 2020. Upon confirmation of your submission, artists are responsible for the delivery of their work to the Satellite Gallery between the dates of Monday, May 4 - Friday, May 22, 2020. Work will need to be collected between the dates of June 27-June 30, 2020 at the Satellite Gallery.

## Alumni Accomplishments

We take pride in the accomplishments of our alumni and look forward to hearing from you. Please share your recent activities (career advancement, honors, publications, appointments, etc.) with us. We welcome newspaper clippings, press releases and pictures. If you would like to share your news with us, please email [melissa.hall@lyndoninstitute.org](mailto:melissa.hall@lyndoninstitute.org) or Mail: Melissa Hall, Lyndon Institute, Lyndon Institute, PO Box 127, Lyndon Center, VT 05850. Be sure to include your email address, if applicable, so we can contact you.

# Annual Giving Report 2018-19



*The Annual Giving Report provides an opportunity for the extended LI community to look back at the previous school year and recognize those who supported efforts to strengthen the School and its diverse programs. Gifts to Lyndon Institute totaled \$269,447 for the fiscal year July 1, 2018 – June 30, 2019 in the form of cash, stocks, in-kind gifts, matching gifts, gifts in memoriam, and scholarships. With your support our students continue to receive the tools they need to succeed today and in the future.*





**1867 Society (\$5,000.00 + )**

3DM Tool Company, Inc.  
 Laura & Richard Ashton 1961††  
 Betsy Bailey 1989  
 Mary Elizabeth Beach 1968\*  
 Susan Pasell Beattie 1963  
 & David Beattie 1961††  
 Louise & Edmund Buschmann 1957 †††  
 Camp Cody  
 Martha Elliott†††  
 Larissa Flynn & Michael Flynn†††  
 Paul Harvey 1984  
 Lyndon Institute Alumni Association†  
 David Stahler, Sr. 1965  
 & Rena Stahler†††  
 The White Market

**Headmaster's Society (\$1,000.00 + )**

Anonymous  
 Jessica & David Aronoff 1982  
 Carrie Bingham Boera 1977  
 & Michael Boera 1977†  
 Laurie Boswell  
 Martha Hill Brooks 1963  
 & Timothy Brooks††  
 Carrie & Lawrence Cipollone  
 Community National Bank†  
 Genise & Earl Daniels 1967†††  
 Davenport & Company LLC†  
 James Davis  
 Steven Douglas 1965  
 & Susan Norton Douglas  
 Patricia Bona Emery 1970  
 & Dana Emery 1970†  
 Susan & James Gallagher 1963†††  
 Julia Semones Guy 1972  
 & Stephan Guy 1972 †  
 Melissa Boulay Hall 1992  
 & Stacy Hall 1987††  
 David Hartwell 1970††  
 Sybil Shonyo Hazen 1954  
 & Waldo Hazen 1953

David Hill 1959††  
 Lorraine Brown Impey 1966  
 & James Impey†  
 Irving Energy Distribution  
 and Marketing  
 Cameron Johnson 1961  
 Carol Krochak & Mark Kilburn  
 Lila Bradley Leonard 1983  
 & Gerald Leonard 1982†  
 Lyndonville Rotary Club†  
 Lorraine Charron Matteis 1965  
 & Vincent Matteis†  
 Monica Fiorenza  
 & Gregory McCormick 1991††  
 Northeast Sports Network  
 Northeastern Vermont  
 Regional Hospital  
 Susanne & Adam Norwood  
 Passumpsic Savings Bank†††  
 Twiladawn Wakefield Perry 1977  
 & John Perry  
 Publishing Concepts, L.P.  
 Brenda & Robert Sattelberger  
 Vermont Community Foundation  
 Rose Stimpson Wheeler 1951  
 & Douglas Wheeler 1947

**T.N. Vail Society (\$500.00 + )**

Dawn Anderson Almon 1973  
 & Edward Almon  
 Bridget & Nolan Atkins  
 Charlotte & Bruce Blackwell 1954  
 Carol & Paul Brouha  
 Burklyn Arts Council††  
 Sonya Boulay Carr 1989  
 & Christopher Carr 1985†  
 Class of 1969  
 Francisco De Cardenas  
 Eleanor Dole†  
 Jeanne Akley Elliott 1964  
 & Arthur Elliott 1963††  
 Martha & Stephen Feltus†††  
 Fenton Chester Arena  
 Carrie & Matthew Fleming 1986  
 GE Foundation  
 Marion Drew Gray 1965  
 & Stephen Gray 1965††  
 Heidi Hazen 1987  
 Nancy Davis Hill 1954†  
 Pattie & Ernest Hutchins 1961††  
 Sarah & John Kresser  
 Elsie Easterbrooks Lawrence 1962  
 & Robert Lawrence 1954  
 Rebecca Lowe & George "Mike" Lowe  
 Linda & Steve McCurry  
 Ryan McDonald 2000

Rebecca Smith McGregor  
 & Andrew McGregor†  
 Claire Stevens Morrison 1968  
 & Harry Morrison††  
 Shelly Flood Noyes 1991  
 & Ryan Noyes 1993†  
 Quality Mitsubishi  
 Queen City Printers, Inc.  
 Trina Rahm  
 Denise & Paul Scavitto  
 Nora & Harwant Sethi†  
 Kinsley & Nathan Sicard 2000†  
 Lori Ruggles Simpson  
 & James Simpson 1980  
 Sara Simpson†††  
 Smug Mug Inc  
 Sorrell's Plumbing & Heating  
 The Wildflower Inn  
 Denise Noel Tomaselli 1988  
 & Joseph Tomaselli 1985  
 Joanne Washburn 1955††  
 Donna & Michael Wheeler 1979  
 Karen & John Wishart 1964  
 Marilee Young  
 Tiffany Lussier Young 1992  
 & Matthew Young 1988

**Viking Club (\$250.00 + )**

AmazonSmile Foundation  
 Sheila Kropsky Aronoff 1954  
 & Gene Aronoff  
 Brian Beattie 1962  
 Wendy Wakefield Beattie 1974  
 & Kenneth Beattie 1974  
 Arthur Charland 1981  
 John Davis 1966†  
 Kristin & Brian Delaney  
 Marlin Devenger 1967††  
 Debra & Paul Dixon  
 Lenore Noyes Dwyer 1981  
 & Gary Dwyer 1980  
 Meredith Feltus 1987  
 & Michael Locher††  
 Sarah Jewell Foster 1989  
 Gate's Electric, Inc. ††  
 Granite State Glass  
 Jacquelyn Patridge Greaves 2005  
 Anne Wheeler Green 1953  
 Cynthia & Paul Greenwood  
 Jane & Daniel Heath 1968††  
 Heighton Mechanical, LLC  
 Kelly Hicks  
 Houghton's Greenhouse  
 Jimmie Howard 1955††

Marilyn Hughes 1954  
 Nancy Eaton Lawrence 1962  
 & Richard Lawrence 1960  
 Sara & Tobin Lussier 1994  
 Lyndon Area Youth Hockey Association  
 Lyndon Booster Club  
 Lyndon Furniture  
 Lyndonville Hardware  
 Lyndonville Redemption Inc. †  
 Noah Manning 2013  
 Michelle & Michael Matteis 1989†  
 Richard McCarthy  
 Linda Noyes McDonald 1968  
 & James McDonald 1966††  
 Amanda Vance O'Meara 2006  
 & Jeffrey O'Meara 2004  
 Gail Ostrout  
 Daniel Pastore & Carolyn Pastore  
 Stephen Paterniti  
 Douglas Patton & Alice Patton  
 Yiren Qu 2017  
 Kristal Simpson Renaudette 1999  
 Valerie Rutledge & Rodger Sheldon  
 Connie Sanville 1990  
 Jay Savage  
 Herman Schnurr & Janet Schnurr  
 Patrick Seymour 2015  
 James Shanahan & Lisa Shanahan  
 Elaine Ingalls Smith 1963  
 & Marvin Smith 1963††  
 Kathryn Jackson Smith 1993  
 & Justin Smith 1993  
 Donna Dwyer Smith 1987  
 & Matthew Smith 1987  
 Pauline Greenwood St. Hilaire  
 & family††  
 The Foundry  
 Lisa & Timothy Ulrich††  
 John Vinton 1979†  
 Pamela & Dana Wakefield 1964†  
 Judy & Richard Wheeler 1951  
 Lara & Jeremy White  
 Cheryl Williamson 1998\*  
 Winterset, Inc.  
 Marcia Sears Woodall 1969  
 & Larry Woodall

**Century Club (\$100.00 + )**  
 Anonymous  
 Aladdin Food Management  
 Services LLC  
 All Around Power Equipment, LLC  
 Sandra Durocher Amadon 1977  
 & Randy Amadon 1974

Jessica Spencer Angell 1992  
 & Richard Angell  
 Appalachian Supply, Inc.  
 Helen Astle 1950  
 Mary Kay Charland Bailey 1954  
 & A. Ranald Bailey 1952  
 Avis Wallace Baird 1941†††  
 Betty & Carlos Bean 1951†  
 Connie & Donald Beattie†  
 Richard Berube 1961†  
 David Bessette 1954  
 David & Elaine Bixby  
 Donald Blake 1963 & Karen Rodliff  
 Blaktop, Inc.  
 Bonnie Brill Boucher 1969  
 Louise George Boulter 1948†††  
 Sherrell Lynch Bowers 1959  
 Dawn & Peter Brittain  
 Gloria Buzzi Buck 1962  
 Deborah & Charles Bucknam†  
 Charles Bull 1949  
 Holly Bull 1980  
 Robert Bullard & Sally Blair Bullard††  
 Burke View Garage  
 Caleb Burrington 2009  
 Louis Buzzi 1964  
 Elsie & Clark Cady 1954  
 Jian Hong Cao  
 Evan Carlson 2002  
 Richard Cassady 1954 & Claire Cassady  
 Century 21 Farm & Forest  
 Holly Charland 1999  
 Ronald Clifford 1952†††  
 Beth & David Cobb  
 Tiffany Corrow 2000  
 Roxanne & Clarence Courser 1958†  
 Crosstown Motors†  
 Dads 4 By Tool & Supply  
 Janet Kwiecienski Daughhetee 1977  
 & Robert Daughhetee  
 Phyllis & Edward Day 1953  
 Mary Ann Greenwood Dennis 1954  
 & Gerald Dennis  
 Linda & Eric Douglas 1966††  
 Dominique Eareckson  
 East Burke Sports  
 Edward Jones  
 Marjorie & Stephen Elliott 1967  
 Carolyn & Steven Elliott 1971  
 Christen Emerson & Shane Stevenson  
 EZ Sharpening Systems LLC  
 John Findlay 1967††  
 Amber Hastie Fissette 1997  
 & Ryan Fissette 1998

Lois Fisher Fowler 1962  
 & William Fowler†††  
 Conni Franz 1979  
 Fred's Plumbing & Heating  
 Cheryl Chamberlain Gaboriault 1981  
 & Mitchell Gaboriault 1979  
 Laura & Richard Gagnon †  
 Amy Patoine Gale 1980  
 & Bretton Gale 1977  
 Leonard Gerardi  
 Madeline Holbrook Grady 1959  
 & William Grady  
 Elizabeth & J. Douglas Graham 1976  
 Louise & Timothy Grant 1959  
 Janet Gray Burnor  
 Tammy Greenwood Stewart 1987  
 & Patrick Stewart  
 Drew Grieves 1954  
 Carol Ashton Griffith 1964†  
 Margaret & Nicholas Hale 1997  
 Sarah & Patrick Ham  
 Thomas Handy††  
 Julie Hansen  
 Faye Clark Heath  
 Joanna Hersey Hersey 1989  
 Mary Ann & Barry Hertz†  
 Linda & Richard Hilton  
 Janice Whitcomb Hopkins 1977  
 & Peter Hopkins 1974  
 Margaret & Stephen Hopkins 1968†  
 Rachel Laramée Howland 1969  
 Kelly Frenette  
 Donald Hunt & Robin Hunt  
 Rose & Patrick Huntoon 1961  
 Jesse Ingalls 1954  
 Vickie Jenkins 1969  
 Tamera Burnham Jones 1979  
 & Jeffrey Jones  
 Kristie Freeto Kelly 1990  
 Karen Zaun Kennedy 1974  
 & Dave Kennedy  
 Colleen Pierce Kerr 1954  
 & William Kerr 1954  
 Tiffany & Timothy Kirchoff 1996†  
 Ain Kivimae 1956†  
 Elizabeth Koenig 2001  
 Elizabeth & Michael Kyle  
 Ruth Lagerberg  
 Barbara Ashton Lamont 1944  
 Monica & William Laramée  
 Jack LaRoche 1954  
 Elizabeth Laverty  
 Kristy Parsons Lefebvre 2002 & Neil  
 Lefebvre 1999





Richard Libera & Kathy Hayes  
 Lise Souliere Lussier 1977  
 & David Lussier 1976  
 Lyndonville Agway  
 Greg MacDiarmid & Elizabeth Walker  
 Richard Macnair 1947  
 Thomas Manges  
 Lisa Manter  
 Maple Grove Farms  
 Sandra LaCroix Maynard 1983  
 Mayo's Furniture & Floor Covering  
 Amy & Kevin McClure 1991  
 Amy Morrisette McGarry 1986  
 & Daniel McGarry†  
 Eric Metoyer 1978††  
 Michael Michaud 1969  
 Kenneth Miller 1959  
 Sandra Mings Lamar & James Lamar  
 Janine & William Mitchell 1988  
 Christine Morey & Robert Morey  
 Northeast Ag Sales  
 Northend Laundry  
 Northern Gas Transport  
 Kitty & Brian Noyes 1974†  
 Cheryl Ronan Noyes 1963  
 & Emery Noyes 1962††  
 NSA Industries  
 Dominique Ouellette  
 Taunia Cassidy Parent 1986  
 & Dennis Parent 1985  
 Paula Bean Pearce & Guy Pearce  
 Kaija Lium Percy 1991 & Jeff Percy 1991  
 Konda & Rob Perkins 1991  
 Karleen & Warren Pettis  
 Kasey & Mark Potter  
 Heather Powers  
 Kathleen Nichols 1990  
 & Jason Prendergast 1989††  
 Lorna Field Quimby 1946††  
 Virginia Lawrence Ray 1955  
 & Albert Ray†††  
 Chelsea Phelan Redd 2000  
 & Joshua Redd  
 Marjorie Astle Reed 1952††  
 Rhtl Partners LLC

Clarissa Rivers Rice 1992  
 & Charles Rice 1990  
 Linda & Keith Ruede  
 Diane Hudson Ruggles 1963††  
 Gail Austin Ruggles 1965  
 & George Ruggles†††  
 Kenneth Sanderson 1959  
 Pamela Charron Schabler 1988  
 & Lee Schabler  
 Susan Schultze Brasmar†  
 Theresa & Joseph Shaffery  
 Gloria Nugent Simms 1954  
 Jessica Lussier Simpson 2002  
 & Chad Simpson 2000  
 Pamela Benoit Simpson 1961  
 Tina Buzzi Simpson 1998  
 & Jacob Simpson 1998  
 Kirsten Simpson & Craig Simpson 1996  
 Steven Simpson 1963  
 Kevin Sleeper 1993  
 Dawn & Brian Smith 1980  
 Scott Spencer  
 St. J Automobile Company  
 Marguerite & Ronald St. John  
 Erica & David Stahler 1990†  
 Terha Gray Steen 1992  
 & Steven Steen 1989  
 Michelle & Jeremy Stevens  
 Monica & Scott Stowell 1994  
 Arthur Taylor 1959††  
 Lorelee Laing Tester 1996  
 & Shawn Tester 1989  
 Christine Wood Thomas 1994/&  
 Stephen Thomas  
 Carol & Randy Thomas  
 Joan Curtis Todd 1964  
 Ethel & Robert Toombs 1967  
 Karen Townsend 1988  
 Beverly Cole Tripp 1947  
 Twin State Ford, Inc.  
 Norma Heath Twombly 1967  
 Lottie Magill Underwood 1954  
 Vermont Lion's Club Charities  
 Ville Auto Supply  
 W.B. Mason  
 Martha Walther & Friedrich Walther  
 Gregory Weaver 1982†  
 Eleanor "Podgie" Blair Weissent 1939  
 Anne & Lauren Welch 1964  
 Lynn Blake Welch 1973  
 & Lyle Welch 1969  
 Ruth Blake Welch 1959  
 Patricia Tanych Weston 1974  
 & Craig Weston  
 Deanna Blake Wheeler 1955

& Durward Wheeler 1954  
 Jean & Paul Wheeler 1974†  
 Melyssa Sargent Whitcomb 1992  
 & Edward Whitcomb  
 Lois Field White 1949  
 Marjorie Masten Willard 1957  
 & James Willard 1957  
 Michael Willey 1980  
 Rachel Astle Wozniak 1956  
 & David Wozniak  
 Mary & Daniel Wyand

### **LI Associates (\$10.00 + )**

Anonymous  
 A Daisy Daze  
 Jennifer Cole Abbott 2000  
 & Keith Abbott 1994  
 Vickie Adams  
 Mya & Michael Allen  
 Ashley Montgomery Allen 2004  
 & Neal Allen 1999  
 Ashley Ambroz  
 Carol & Stephen Amos  
 Madeline Antonucci  
 Patricia & Gary Aubin 1963  
 Jennifer Craig Aubin 1991  
 & Ronald Aubin 1987  
 Backyard Maple Farms  
 Barbara Bailey  
 & Eric Hermanson  
 Meredith & Daniel Baillargeon 2005  
 Sharon & Preston Baillargeon 1976  
 Sarah Graeve Baker 1984  
 & Stephen Baker  
 Dominique Bandy 2020  
 Heather Pulver Gaillard Batalion 2002  
 & Philip Batalion  
 Gladys John Batchelder 1954  
 & Donald Batchelder  
 Kelly Bean 1984  
 Loraine Cox Bedor 1954  
 Melissa Bedor 2000  
 Kim Hackett Before 1983  
 & Bradley Before 1979  
 Tina & Gene Before 1989  
 Dawn & Melvin Bennett  
 Andrew Berley†  
 Meredith Root Berry 1992  
 & Eric Berry 1985  
 Nicole Vendituoli Berry 2003  
 & Derrick Berry 2004  
 Cecile Riendeau Berry 1982  
 & Russell Berry 1979  
 Penny Olcott Bessom 1990  
 & Rick Bessom  
 Magen Dwyer Bias 2005  
 & Jeremiah Bias 2002

Lorraine Donaldson Bickford 1964  
 & Philip Bickford  
 Deborah Bigelow  
 Nicole Buzzi Bigelow 1994  
 & Chad Bigelow  
 Patricia Boera 1973  
 Michelle Laferriere & Eric Bogie  
 Catherine Boykin & Walter Morris  
 Danielle Schartner Brigham 2006  
 & Lance Brigham 2006  
 Linda Baird Britt 1966  
 Anne Morrisette Brown 1964  
 & Richard Brown  
 Fae Mackay Brown 1984  
 Jaime Brown  
 Margaret Bandy Brown 1991  
 & Philip Brown  
 Tricia & Heath Bunnell  
 Terry Emery Bunnell 1999  
 & Sheldon Bunnell  
 Janet Chickering  
 & Ken Burchesky Family  
 Stephanie Burgess 1994  
 Kay Weed Byrne 1954  
 & John Byrne  
 Cabot Creamery  
 Robert Cain 1955  
 Daniel Camber 1990  
 Daniel Carleton 1977  
 Christine Carlsen  
 Pamela Johnson Carr 1983  
 James Caswell 1974  
 Stephanie & Michael Chadburn  
 Douglas Chapman  
 Janet Charron 1959  
 Lisa Charron 1993  
 & Jeremy Godfrey 1994  
 Nelson Charron 1969  
 Sylvia & Robert Charron 1947  
 Douglas Chatman 1969  
 Timothy Chippeo 1979  
 Chuck's Flooring and Tile Inc.  
 Harman Clark\*  
 Disa & J. Douglas Clarner  
 Karen Fleming Clouatre 1984  
 Phoebe Cavanaugh Cobb  
 Angela Cochrane  
 Fallon Bean Cole 2001  
 & Kevin Cole 2002  
 Ruth Cross Cole 1959  
 Christine Cotnoir  
 Patricia Gordon Crocker 1969  
 & James Crocker  
 Claudisha Curtis 2019  
 Courtney & Eric Daffinrud  
 Charlotte Cole Dane 1954 & Clair Dane  
 Marion Randall Dane 1954  
 Jeniane Langmaid Daniels  
 & Randy Rathburn

Carol Davis & Darryl Davis  
 Elizabeth Davis  
 Stephanie Davis 2000  
 Julie Rivard Demers 1994  
 & Craig Demers 1995  
 Margaret & Andre Deos 1969  
 Mary Deos  
 Robert Derosier 1950††  
 Jean Mitchem Desrochers 1964  
 & Richard Desrochers  
 Jennifer Raymond Desrosiers 1995  
 & Roger Desrosiers  
 Marie Desrosiers  
 Michael Dickerman 1974  
 Jason DiGiulio  
 Jennie Switser Dion 1969  
 & Wayne Dion  
 Sylvia Dodge  
 Adrienne & Doug D'Olimpio  
 Tricia Lussier Doyon 2007  
 & Mathew Doyon 2005  
 Paul Dubey 1956 & Kumiko Dubey†††  
 Patti Dubielak  
 Stacey Mitchell Shufelt Dwyer 2002  
 & Joe Dwyer 1998  
 Stephanie Spaulding Dwyer 1999  
 & Michael Dwyer 2000  
 Mercedes & Jason Edgar  
 Valeria & Matthew Elliott 1997  
 Richard Elliott 1974  
 Joy & Patrick Ely 1992  
 Judy Niles Emerson 1969  
 & Wesley Emerson 1965  
 Bernice Gallardo Emmons 1990  
 & Benjamin Emmons  
 Everybuddy's Casual Dining  
 Ann Ruggles Fassett 1954  
 Pamela Felch  
 Holli Webber Fenoff 1989  
 & Christopher Fenoff  
 Michelle Fenoff  
 Sara Flynn & Paul Hansen  
 Barbara Eaton Follett 1968  
 & Frank Follett  
 Patricia Gero Forget 1965  
 & James Forget 1964  
 Jamie Fournier 2001  
 Patricia & Stanley Francis 1961†  
 Brittney Fraser 2004  
 Freighthouse Market & Cafe  
 Brenda Densmore Gale 1974  
 & Warren Gale  
 Fay & Robert Gallant  
 Wanita Gorham Gardner 1964  
 & Don Gardner  
 Angela Cross Gaskin 1989  
 & Kevin Gaskin 1992  
 Paula Graves Gaskin 1971  
 & Timothy Gaskin 1978



Kristen Gates  
 Janice Dutton Gendreau 1964  
 Judy Flood Gilman 1964  
 Eileen Goodrich & Paul Goodrich  
 Denise & Bradley Goodwin 1985  
 Jennifer Townsend Grant 1993  
 & Bradley Grant 1989  
 Casey Grant 1989 & Penny Gabaree  
 Green Mountain Books & Prints  
 Desiree Greenwood  
 Amber Bevilacqua Gregory 1993  
 & Andy Gregory  
 Julie Guerette & Garrett Paquette 1992  
 Annie & Michael Guyer 1970  
 Sherry Gilman Hall 1959  
 & Frederick Hall  
 Jennifer & Robbie Hallett  
 Brenda & Leslie Ham 1965  
 Alleson & Paul Hamelin  
 Gloria Kilpatrick Hancock 1959  
 & Rodney Hancock  
 Tisha Hankinson  
 Kelly & Jack Harris  
 Nancy Rexford Hartwell 1977  
 & William Hartwell 1974  
 Lynn Johnson Harvey 1977  
 Catherine Haskell  
 Robert Heath 1988  
 Buffie & Sean Hegarty  
 Jenna & Bruce Heinrich  
 Rene & Russell Henderson  
 Desiree Hertz 1989  
 & Christopher Manges 1987†  
 Brian Hilliard 1989  
 Annabelle Masure Hodges 1944  
 & Guy Hodges  
 Sandra Holbrook 1959  
 Stephanie Charles Holden 2003  
 John Holland  
 Dean Holmes 1971  
 William Holt 1964  
 Denielle Hopkins 2012  
 & Jason Hopkins 2003  
 Candace Houghton 2001  
 & Zeb Patridge 2007  
 Daniel Houghton 2006  
 Essie Howe  
 Faith Gaskell Hunt 1969 & Stewart Hunt  
 Sandra Rexford Ingerson 1969



& Richard Ingerson  
 Debra & Jerry Isham  
 Aaren James 1989  
 James Jardine 1964  
 Tonja Gochie Jardine 1989  
 & Stephen Jardine 1985  
 JD Photography  
 Rebecca Simpson Jenkins 2003  
 & Derrick Jenkins 2002  
 Michael John 1979  
 David Johnson 1979  
 Amy Dolloff Joyal 1988  
 Madeleine Huhn Joyce 1957  
 Thomas Keppel 1961\*  
 Stephanie Kimball  
 Cheryl & James Krause  
 Pamela Simpson Kvam 1969  
 & Daniel Kvam  
 Darcy Mitchell Labounty 1999  
 & Michael Labounty  
 Anitra Lahiri & Nik Clements  
 Jason Lanctot 2007  
 Hazel Hoag Landa 1960  
 Donald Lang 1959  
 Tiffany & Jonathan Lasnier  
 Jeanne Laughton  
 Linda McClure Leach 1965 & Kenneth  
 Leach 1964  
 Beth & Gregory Lemnah  
 Javin Leonard  
 Sandra Lepine  
 Edmond Lessard 1994  
 Beverly Paige Lewis 1954  
 Mildred Lewis†  
 Magon Lindgren 1996  
 Robyn Lotspeich Costa 1999  
 Cheryl Cassady Lowman 1971  
 & Fred Lowman  
 Heidi Gaskin Lussier 1971  
 & Reginald Lussier  
 Lyndon Buffet  
 Lyndonville Bagel Depot  
 Lyndonville House of Pizza  
 Cailean MacKinnon  
 Caitlin & Logan Macomber 2008  
 Desiree Hertz 1989  
 & Christopher Manges 1987  
 M. Kathleen Manley

Ardell Allard Mansfield 1939  
 Ana Marcotte  
 Lynn Easter Masure 1974  
 & Michael Masure 1980  
 Cheryl & Darrell Mathews  
 Cheryl Smith Matzen 1962  
 & James Matzen  
 Lorrie & Brian Mawhinney  
 Michelle & Shawn McCaffrey 1990  
 Mary McCormick  
 Nadine Bennett McCue 1964  
 & David McCue 1962  
 Crystel Larabee McFarland 1969  
 Donna Charron McFarland 1974  
 & Melvin McFarland  
 Eric McHugh 1995  
 & Jessica Foss McHugh  
 Liliane McHugh  
 Cynthia Paris McKnight 1969  
 & Frederick McKnight 1972  
 Lyndi Gaskin Medico 2006  
 & Jason Medico  
 Norma Grant Metz 1964 & Steven Metz  
 Peter Michaud 1978 & Paula Michaud  
 Melynda Sargent Miller 1992  
 & Herbert Miller 1989  
 Barbara & Peter Miller  
 Jennifer O'Meara Mitchell 2001  
 & Jason Mitchell 1993  
 Alex Montgomery 2012  
 Denise Carreau Montgomery 1999  
 Gina Jones Brisson 1992  
 & Sean Montgomery 2000  
 Louise & John Moses ††  
 Mountain View Auto Restoration, Inc.  
 Joni Nelson 1998  
 Patricia Gilman Nelson 1958  
 & John Nelson  
 Martha Kjellman Nemiccolo 1966  
 & Paul Nemiccolo  
 Jessica Barrett Newland 2006  
 & Phillip Newland 1999  
 Kathy Bassett Newland 1967  
 & Leslie Newland 1962  
 Rachel Norway  
 Jennifer Cole Noyes 2002  
 & David Noyes 1999  
 Wade Noyes 1979  
 Kerry & Luke O'Brien  
 Sara O'Connor  
 Heather Hawk Ott 1999  
 Baylow & Justin Ouellette 1995  
 Jennifer Simpson Palmieri 1996  
 & Dana Palmieri 1996  
 Lanny Paris 1952†  
 Brennan Parker 2009  
 Renee Parker 1989  
 Dolan Patrick

Constant Joy Patridge  
 Jessica Paul  
 Corinne Pond & Matthew Pecor  
 Theresa & Charles Pelletier  
 Dawn & Robert Peters 1985  
 Mandy & Nicholas Pike  
 Carol Bennett Pilette 1964  
 Anna Pinkerton  
 Wayne Pittman 2004  
 James Plankey  
 Karley Poole 2004  
 Charlotte Porcelli  
 Janet Allard Powers 1983  
 & Jeffrey Powers 1979  
 Wanda & Donald Prince  
 Tara McCaffrey Prue 1994 & Jon Prue  
 David Ramsdell 1968  
 James Ramsdell 1969  
 Patricia & James Rancati  
 Heather Young Ranney  
 & Troy Ranney 1999  
 Mariko Gilman Raymond 1993  
 & John Raymond 1992  
 Mary Ellen & Rodney Reis  
 Dan Renaudette 1997  
 Arcelie Reyes & Evan Newell  
 Patricia King Richmond 1964  
 & Douglas Richmond  
 Rachel & Andrew Riendeau 2012  
 Rita Friend Riendeau 1984  
 & Gerard Riendeau  
 Alice Roberge  
 Ryan Robinson  
 Erin & Nathan Rosetti  
 Martha Pasell Ross 1964  
 & James Ross 1964  
 Darci Ruggles  
 Tara Jean Olcott Samora 1993  
 & Nicholaus Samora  
 Barbara Sanborn  
 Kevin Santo 1989  
 Amanda Bedor Sanville 1992  
 & Mark Sanville 1992†  
 Cindy & Ronald Sanville  
 Brittany & Gerald Schartner 2007  
 Paul Schartner 2007  
 Prudence Belcher Schuler 1949  
 & George Schuler  
 Billie Jo Bandy Shatney 1997  
 Laura Dangel Shaw 1979  
 Tracy Willey Sherbrook 1984  
 & V. Michael Sherbrook  
 Jessica Sherman  
 Jessica Waldron Shover 1999  
 & Luke Shover  
 Audra McHarg Sicard 1998  
 & Andrew Sicard  
 Charlotte Doyon Simpson 1964





Kirsten & Craig Simpson 1996  
Marcie Gillespie Simpson 1995  
& Ryan Simpson 1996  
Sharon & Russell Simpson 1959  
Danika Wilkins Norcross Sizen 2015  
& Tucker Sizen 2015  
Elaine Skinner  
Brandie Slicer  
Charles Smith 1970  
Gina & Charles Smith 1969  
Linda McKeon Smith  
Lori Charron Smith 1976 & Bryan Smith  
Michael Smith 2006  
Shelly Degreenia Smith 1989  
& Jeffrey Smith 1981  
Susan Boera Sobczak 1982  
& David Sobczak  
Jackson Solomon 2013  
Janice Hunter Somers 1959  
N. Charles Somers 1979  
Judi St. Hilaire 1977 & Paul Coogan  
Daniel Stahler 1992  
Stahler Furniture  
Kathi Fisher Stewart 1973  
& Larry Stewart  
Amie Gilman Stillson 1995  
Karen Gallagher Stimpson 1989  
& James Stimpson 1985  
Christine Sanderson Stoll Bellavia 1984  
& Jonathan Bellavia  
Arlene Bandy Stone 1959  
& Lee Stone 1957  
Asta Marie Stounberg 2020  
Kayleen Flood Stowell 1959  
& Merwin Stowell  
Mary Garcia Straight 1983  
& Dennis Straight  
Cindy Stratouly  
Lyndonville Subway  
Patrick Switser 2018  
Thomas Tanner 1999  
Holly Bean Taylor 1995  
& Christopher Taylor 1993  
Jody & Jason Taylor  
Rebecca Taylor

Benamina Tessier & John Tessier  
The Dairy Association Co., Inc.  
The Gun Shop, LLC  
The Metric Wrench  
The Nixon Company, Inc.  
Christina Hoy Therriault 2003  
& Christopher Therriault  
Barbara & Douglas Thompson 1947†  
Karen Thompson 1985  
Denise Noel Tomaselli 1988 & Joseph  
Tomaselli 1985  
Delores Charron Towle 1974  
Amanda Trucott  
Shirley Day Urie 1955†  
Jamie Hackett Utley 1998/& Dana Utley  
1998  
Merritt Vantine 1964†††  
Ransom Varley 1977  
Jan Bora Wade 1986 & Richard Wade  
Paula Cornell Ward 1994 & Wes Ward  
Lisa & William Ware  
Bobbi Warner Somers & Brian Somers  
Miranda Weeks 2004/& Justin Royer  
1999  
Heather Root Wheeler 1990 & Jeremy  
Wheeler 1999†  
Jodi Smith Wheeler 1987 & Richard  
Wheeler 1982  
Beverly Stowell Whipple 1954  
Patsy Nelson Whitcomb 1969 & Bruce  
Whitcomb 1971  
Cynthia Newland White 1979  
Sarah & Rory Whitemore  
Shawna Bailey Wilkerson 1969  
Stacey Ruggles Willey 1993 & Brian  
Willey 1987  
Kilee & Chris Willey  
Debra Willey Brown 1974  
Sarah & Janssen Willhoit  
Traci Williams 1982  
W. David Williams 1978  
Mary & Edward Wood 1966  
Joan Wood  
Vicki Wood  
Doreen Yerkes  
Polly Walton Yerkes 1990 & Jamie  
Yerkes 1989

### **LI Friends (\$1.00 +)**

Robin Quimby Aldrich 1981  
& Barry Aldrich  
Brianna Bishop 2014  
Thomas Bishop  
Eileen Blackbird  
John Blaisdell Provan 1982  
Amanda & Travis Bugbee  
Garfield Burnham

Robert Carey  
Madeline Cobb  
Allene & Frederick Cornell  
Jamie Crooks 2001  
Anthony Cucinotta  
Peggy Dunphy 1990  
Janet Dunphy Brown 1987  
& Jeffrey Brown 1991  
Monica Pineda Hernandez  
& Martin Etter 2003  
Gregory Frederick 1974  
Robert Gilman 1975  
Shannon Glodgett  
Kenneth Grant  
Abigail Ham 2019  
Heather Hannux  
Cynthia Helmbreck  
Kevin Hickey  
Meagan Newland Howard 2002  
& Spencer Howard  
Linda & Eric Johnson  
Bonnie Kirchoff 1998  
Marilou Kozak  
Wayne Lafont  
Allen Lamothe  
Brianna Lamothe 2017  
Buddy Lamothe 2009  
Robert Lemnah 2013  
Amy & Judd Levine  
Kristen Miller  
Paul Mosher  
Jill Morrison Nichols 2004  
& Barrett Nichols†  
Amy & Michael Nixon  
Mary Ann O'Dell  
Holly Mills Pierce 2000 & Josh Pierce  
Stacy Webster Pinsonneault  
& Joe Pinsonneault  
Ann Pope  
Patrick Rainville  
Lauren Ruffner  
Lynn Santangelo†  
Henrik Soeholt & Helle Soeholt  
Hillary Labounty Stone  
& Michael Stone 1999  
Theresa & Eric Stuepfert  
Casey Tanner 2006  
Roxanne Truhart  
Keith Upham  
Bruce Wakefield 1977  
Laura Wayne  
Ruth Weaver  
Brian Wheeler 2002



### Stock Gifts

Paul Harvey 1984

### Matching Gifts

GE Foundation

### Class Gifts

1939  
1944  
1949  
1954  
1959  
1964  
1969  
1974  
1979  
1984  
1989  
1999  
2009  
2014

### New Life Memberships to LIAA

Jordan Atterbury 2019  
Kirkland "KC" Carter 2019  
Brian Noyes 1974  
Jingyi "Cloe" Wan 2019

### LI THANKS ALL THOSE WHO DONATED TO SPECIAL FUNDS IN MEMORY OR IN HONOR OF THE FOLLOWING INDIVIDUALS:

Theta Baker  
Nikki Berry  
Doris Boulay  
May Campbell  
George Duke  
Clara Eastman  
John Elliott  
Loretta Fenoff  
Evelyn Fuller  
Robert G. Heath, Sr.  
Kimberly E. Hill

\* Denotes deceased donor

† Denotes donor has given for 5+ consecutive years

†† Denotes donor has given for 10+ consecutive years

††† Denotes donor has given for 20+ consecutive years

Bertha T. Koury  
Bailey Kuk  
Merton Leonard  
Archie Mallon  
Twila Perry  
Nancy Shonyo Rahm  
Tina Ruggles  
Gary Simpson  
Tim Simpson  
Terha Steen  
Cathie Tavares  
Walter True  
Drury Vinton  
Eleanor M. Weissent

*Care was taken to ensure the accuracy of the information in this report, but we recognize that mistakes do occur. If you were a donor in 2018-2019 and your name was inadvertently misspelled, omitted or listed in the wrong place, please forgive us and let us know so that we can correct our records.*



# Retired Faculty & Staff

Lyndon Institute Director of Athletics and Activities, Paul Wheeler, retired at the end of the 2018-19 school year. Over the course of his 24 years of work as an administrator at LI, he has accomplished many achievements.

Paul joined the administrative team at Lyndon Institute in 1995 as Director of Development, then was named Assistant Head for External Affairs. For the last 16 years, Paul has served as Lyndon Institute's Director of Athletics and Activities. The program has grown to 40+ teams and 50+ coaches during his tenure. He was LI's track and field coach for seven years, leading the boy's team to state titles in 2000 and 2002. Paul's most recent accomplishment came when he was inducted into the Vermont Principals' Association Hall of Fame at an awards banquet at the Capital Plaza in Montpelier on May 3rd, 2019.

Over the course of Paul's time as Lyndon Institute's Director of Athletics and Activities, he has seen LI teams take home 21 state championships. But more important than winning or losing, his philosophy in leading the athletics and activities program is simple. "If Lyndon Institute students are better prepared for success in life because they participated in our programs, we've done our job." Paul ended his tenure at LI at the end of June 2019 and is missed by the entire Lyndon Institute community.



# New Faculty & Staff

**Top: Candace Carlson, Instructional Assistant (left), Jaclyn Simpson, Instructional Assistant (middle, left), Debi Smith, Instructional Assistant (middle, right), Eric Berry, Director of Athletics and Activities (right) Bottom: Cheyenne Ruggles, Instructional Assistant (left), Joy King, Instructional Assistant - School Based Counselor (middle, left), Mike Finnegan, Long Term Substitute (middle, right), Leanne Ledo, Instructional Assistant (right)**





# Thompson Cottage

David Stahler, Jr.

As you drive up the hill to the school, you may notice it—a white building, small and unassuming, a classic New England cottage that for me, during my time as a student, was simply known as “the headmaster’s house.” Or—if you’re not paying attention—you may not notice it at all, for the eye is naturally drawn to the majestic main building with its bell tower, white columns, and ivy-covered brick that rises on the hilltop above it. However, this white house, called Thompson Cottage (not to be confused with its big brother, Thompson Hall, that looms over it) lies at the heart of our campus and has come to serve, in part, as Lyndon Institute’s memory and the heart of what binds this community together—its alums.

The house is named in honor of its original owner, Sumner Shaw Thompson, whose residence consisted of both the house and a barn. When the original school formed in 1867 as the Lyndon Literary and Biblical Institution, S.S. Thompson was among its first incorporators. The next year, Thompson became one of its first trustees, serving both on the executive committee and as treasurer. Soon after, the board began searching for a good site for the new school and, at an executive committee meeting in November of 1869, settled on its current location when Thompson agreed to sell the hill behind his home for \$650 and keep his residence on the green, though the barn was taken down and the house moved a short distance to its current location.

Thompson continued to support the school as the years went on, serving as president of the board of trustees in 1873 and continuing as an officer for the rest of his life, at one point donating \$20,000 to the school—a considerable sum in the late 1800s—to help cover its recurring budget deficits. In 1883, when the school was once again struggling financially, he bought liens on the school, then offered to turn them over to the board on the condition that \$25,000 be raised for a permanent endowment and the school become non-sectarian. Thompson served once again as president of the board from 1884 until his death in 1889, at which point his estate deeded his residence to the school.

For many years, it remained a home, hosting a long line of headmasters and, on occasion, faculty. Among them was my freshman English teacher and Nordic coach David Dwyer and his wife Cathy, who lived there for a time in the '70s. (I think David may have told me a story or two about hosting various faculty parties in the cottage during that time...). Headmaster Cyrus Benson and his family were the last residents to occupy the cottage. When he stepped down as Head in 1987, the end of my freshman year, the house took on a new life.

By 1998, Thompson Cottage housed both the Development Office, along with the Athletic Director’s office. But the biggest change came in 2006, when the main floor was renovated to accommodate LI’s Alumni Association, with its accompanying museum and school store. The front porch was enclosed with large picture windows; overlooking Lewis Field, the new space—dubbed the “Skybox” by former headmaster Dwight Davis—offers a perfect view for visiting alums who want to take in autumn home football games but want to avoid the autumn chill.

For such an unassuming building, the interior space of Thompson Cottage is surprisingly large. A pair of offices occupy the former upstairs bedrooms. A cozy conference room, complete with a fireplace and a beautiful cherry table and chairs made by LI alum Dave Allard, takes up one side of the main floor. The other side houses the Development Office in the back, while the Alumni Office, Museum, and School Store sprawls throughout the rest of the downstairs.

Entering the space, the visitor is greeted not only by racks of new jackets, sweatshirts, and other Viking ware, but also by a panoply of vintage photographs of various stages of the campus’s buildings and grounds, of former beloved teachers, graduates, coaches, and administrators, as well as pictures of so many championship teams from all periods of the school’s history. A student-made scale model of the original Thompson Hall that burned in the 1920’s perches on top of a file cabinet, while antique dresses and uniforms hang on the walls amid beautifully framed and scripted certificates and diplomas. Yearbooks going back decade after decade for the last 150 years lay on bookshelves, inviting anyone to take a look.

To enter the space is to enter history, the history of a community to which so many belong, and feel the accumulation of time bound by love and commitment. My classmate, Heather (Root) Wheeler '90, who serves as the Alumni Coordinator, tells me it’s rare a day goes by without at least a few guests popping in to get a glimpse of the past and a better sense of their connection to it. The Alumni Association has worked hard to gather and maintain these artifacts, though they would welcome a volunteer whose love of both the school and history would allow them to serve as curator. Thompson Cottage, a gem at the heart of Lyndon Institute’s campus, may no longer serve as a residence, but it is home to many important functions—a place to store relics of the past, a place for LI community members to meet and discuss its present goals, and a development office to help secure its future. And while its roof has seen better days and is in need of replacement, the building itself remains remarkably vital in spite of its age.

So the next time you’re driving up the hill, give it another look, remember its service, and—if you can take the time—stop in for a visit and reconnect with a past that belongs to us all.



# Athletics

A quick review of the 2018 - 19 athletic year provides us with a glimpse of what may lie ahead.



## Fall

The fall was highlighted by a historic run in Boys Volleyball. 3-year captain Lyle Hansen and Valedictorian Connor McClure led the team to the State Championship game against CVU, where we handed them their first loss of a set on the season. In an epic battle, however, we ultimately lost 3 sets to 1. Girls Volleyball team welcomed a power hitter from Czech Republic and 3 new seniors who stepped right into key roles on the team. Returning players mentored this new group and our squad played strong against all the top ranked teams in the state.

Field hockey ended the season with a 9-6 overall record. We lost in the quarterfinals 2-1 to St. J. Several of our players received recognition on the Capital League Teams.

In Girls Soccer the season didn't produce any victories, but our coaches believed we were playing better soccer at the end of the season than the beginning. The LI Boys Soccer Team played a hard working style of soccer that typifies the team's motto of AS ONE. Sophomore Omari Bain was a standout with 18 goals and selected to the All-State Team.

Viking Football was led on offense by senior Steven Ferraro and on defense by senior Kayden Lewis. The team made it into the playoffs where they faced off against #1 seed, Burr and Burton Academy. The Vikings finished the season with a 2-9 record.

The Boys and Girls Cross Country teams had a productive year. At the League Championships the boy's team placed 9th overall, being led by sophomores Holden Middleton and Andrzej Prince. Jasmin Baillargeon placed

12th overall for the girls. At the State Championships, Holden and Andrzej again led the team to a 9th place finish in Division 2. Jasmin was 17th overall.

With our coach tasked with taking over the Golf team just two days prior to the season starting, the season seemed potentially daunting. With hard work, they surpassed all expectations. They won their final four matches of the regular season and they qualified for the state championship.

Cheer saw Julia Before take top gun champion for Jumps and Tumbling for the second year in a row at NVAC cheer competition. She also placed 1st place in Lake Division @ NVAC and 3rd place Large Varsity @ NVAC.

## Winter

The Indoor Track teams ended the year with the men 12th at States and the women just missing the podium in 4th. Camryn Heath ended the year as overall State Champion in the Shot, while Sydney Smith was 2nd overall in both the Shot and in the Weight Throw.

Our Boys Hockey program combined with North Country for the first time ever, establishing a solid 23-player team. The talented group gelled together and went deep into playoffs, taking a tough last minute 4-3 semi-final loss on the road against Woodstock. On the Girls Hockey circuit, we finished with a record of 9-10-1. Olivia Matteis was a team leader for the Kingdom Blades, a group of young ladies comprised to make up our team from LI, North Country, St. Johnsbury Academy, Danville, and Lake Region.

Boys Alpine team member David Kantor skied to a win as well as numerous top 10 finishes. The women were 3rd in the



district championships as well as 3rd in the State Championships. Lena Sauter skied to a VT High School first! Lena won every high school regular season race as well as the districts, state championships and the Eastern High School Championships.

The Nordic team had strong individual performances by Kate O'Farrell and Holden Middleton. Our carnival event with the alpine team was a huge success with many participating in the "skimeister". Our annual all night Ski-a-thon fund raiser wrapped up the season.

The Girls Basketball team finished with a 7 and 14 record while competing in the Division 1 playoffs. 1<sup>st</sup> year coach Ben Arsenault had his team playing its best basketball at season's end. The Boys Basketball team would play twelve of their twenty regular season games on the road. When the team played its best basketball in mid-January, adversity struck in the form of injuries. The season ended with a playoff loss to state finalist Rutland High School

The Cheerleading squad are dedicated to their craft and have shown tremendous support to all of our teams at LI. They were also crowned the NVAC Lake Division champions.

## Spring

Girls Softball finished the season with a 15-0 record and achieved the number 3 seed in the D1 playoffs. We fell to the Thunderbirds with 5-1 loss ending the year with a 17-1 record. We were the NVAC Capital League champions and the Vikings have been moved back to D2 for this coming spring. In Baseball our athletes also won the NVAC Capital League title. It was a very successful year going 10 and 5 and having over 40 kids try out to be part of a program. We bowed out of the D1 playoffs but will be home in D2 starting the Spring of 2019.

Both of our Outdoor Track teams ended the year with 10th place team finishes at the D2 State Championships. On the men's side, Holden Middleton scored the majority of the points finishing 3rd in the 110 hurdles and 4th in the 300 hurdles. On the ladies side, distance runner Jasmin Baillargeon scored a 7th place finish in the 3000 meters. Adding to the scoring was Sydney Smith with a top six in the shot put and Camryn Heath again won the shot put and ended up 2nd in the discus.

In Boys Ultimate our team went 7 and 5 and bowed out of the playoffs losing to South Burlington in the first round of the tournament. On the girl's side we compiled a 4 and 6 record and lost to eventual champion Montpelier in the first round of the playoffs.



Lyndon Institute's Jeremy White has been named as their new Varsity Girls Soccer coach.

## Lyndon Institute Hires New Varsity Girls Soccer Coach

Lyndon Institute announced that Jeremy White would be the new Varsity Girls Soccer starting in the fall of 2019. White currently works as the school's Flexible Pathways and Work-Based Learning Coordinator.

White brings with him several years of experience in running a soccer program. He led a very strong program at Danville, from 2008 to 2014, and his teams battled higher divisional opponents during the regular season, while also fiercely battling higher-ranked opponents in the playoffs year in and year out.

Assistant coach Jennifer Moore will join White who replaced former coach Frank Leaf. Leaf stepped down at the end of the 2018 season after serving as the head coach of LI's Varsity Girls Soccer program for eight years.



Mrs. Mallory (Jacob) Walsh '09 with alumni bridesmaids, Erin Grout, Jillian Tanych, Josephine Jacob, Lynzy Guyer and Anna (Amodeo) Young

1935

**Margaret (Sutton) Engman**

celebrated her 101st birthday on August 4, 2019. We hope you had a great day Margaret!



Margaret (Sutton) Engman '35 and her great-granddaughter, Stephanie Grant '21

1975

**Nancy Williams Stevens**

was recently appointed, Records Manager, for the Department of Homeland Security's Science and Technology Directorate in Washington, DC.

1994

**Mark Brosseau** discovered art by way of chemistry and architecture. After graduating from LI he entered Dartmouth College with the intention of pursuing studies in chemistry. His interest soon shifted to architecture, a curriculum that required a drawing class. That drawing class changed

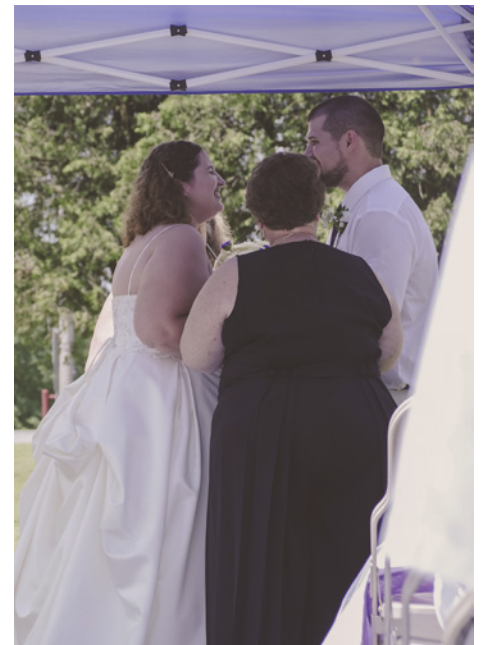
not only his college major but also his life, introducing him to the world of creative exploration that fuels his passion and intellectual curiosity today. Mark graduated with honors from Dartmouth in 1998 with a BA in Studio Art, and then earned an MFA in Painting from the University of Pennsylvania in 2001. He followed that with a year of painting and printmaking in Iceland as a Fulbright Scholar. He has had fourteen solo exhibitions, the most recent being Far-fetched at the University of Saint Mary in Leavenworth, KS this past February. His work has been featured in numerous publications, including *New American Paintings* (2003), and reviewed by *ArtForum*, the *Philadelphia Inquirer*, *Two Coats of Paint*, the *Artblog*, and others. He is an active member of the artist-run



Mark Brosseau '94

network *Tiger Strikes Asteroid*. Mark currently lives with his wife and two

dogs in Greer, SC, and teaches at Clemson University and Wofford College. He is a 2019 recipient of a grant from the Pollock-Krasner Foundation. Abraham McNally '93 and Mark collaborated on an exhibition last summer at catamount arts in St. Johnsbury, Vermont.



Elizabeth "Annie" (Gregory) Klun '00, and husband Jeffrey-Michael



2000

**Elizabeth “Annie” (Gregory)** and Jeffrey-Michael Klun were united in marriage on July 20, 2019.

2001

**Sarah (Chasse)** and Jeff Dickinson welcomed a daughter, Maeve Elizabeth Dickinson on April 20, 2019. She joins a brother, Clark.

**Heather Lawson** has always been an artist and now she uses it as an outlet for stress. She enrolled in the Community Rehabilitation Program at Northeast Kingdom Health Services and creates art to enrich communities and enhance the ability to live her life. A recent article in the August 30th edition of The Caledonian-Record written by Lila Bennett showcases the program and Heather’s art. Her paintings were shown at The 99 Gallery in Newport, Vermont and she sold five paintings!

2002

**Stacia (Murtiff)** and husband, Dan Willson welcomed a son, Paxson Dean Willson on July 17, 2019. He joins three siblings.



Stacia (Murtiff) Willson '02 and family

2004

**Ashley (Wheeler)** and husband, Patrick Ruddy, welcomed a son Michael Patrick Ruddy on December 13, 2018.



Ashley (Wheeler) Ruddy '04 and family

**Frannie Koenig** and husband Gerard Chang welcomed a daughter, Marin Olivia Chang on June 1, 2019.

**Kelly Wentworth and Justin Albright '06**, of West Burke, Vermont announce the birth of their daughter, Amelia Grace Albright on July 13, 2019. She joins siblings, Vivian, Stella, Zoe, and Aiden. Kelly is a substitute teacher with the Kingdom East School District and is attending Springfield College. Justin is employed with Radiantec, Inc. They are planning a Key West wedding in 2020!



Justin Albright '06 & Kelly Wentworth '04 with daughter, Amelia

2005

**Niki Laferriere** and Christopher King welcomed daughter, Eve Laferriere King on April 5, 2019.

**Lindsey (Mitchell)** and Ira Wheeler were united in marriage on March 16, 2019.



Lindsey (Mitchell) '05, and husband Ira Wheeler along with their children

2006

**Shannon (Casey)** and Michael Santostefano welcomed a daughter, Aria Mia Santostefano on August 13, 2019. They are currently living in Colchester, Connecticut and they love spending all of their time with Aria and their two dogs.



Shannon (Casey) '06 & Family

2008

**Patrick Conly** and wife, Michelle, welcomed a daughter, Lucy Grace Conly on March 3, 2019. She joins a brother, Maverick.



Patrick '08 & Michelle Conly's daughter, Lucy

The alumni office would like to know about what's new in your life! Contact the alumni office with your information and photos. Heather.Wheeler@lyndoninstitute.org



**Alyssa Davis**, who has spent the past three years as an assistant coach at the University of Chicago following three years as head coach at Southern Vermont college, has joined the Princeton softball staff as an assistant coach. “We are excited to have Alyssa Davis join our coaching staff for the 2019-20 season,” Princeton head coach Lisa Van Ackeren said. “Alyssa has had formative experiences as a multi-sport student-athlete and as a coach at her alma mater and at the University of Chicago that give her a unique perspective to add to our team. In the interview process, she was thoughtful, relationship-driven, and has a team-first mentality that speaks to our program’s culture. She will jump right into things this fall with team workouts, recruiting, and all things Princeton Softball.” Davis played both softball and basketball at Southern Vermont, graduating as the school’s all-time leader in on-base percentage, hits, runs, stolen bases, home runs and RBI, earning two first-team all-conference honors. She was the basketball team’s third-leading player in program history with 148 career assists and second with 138 career 3-pointers. She comes to Princeton after three years as an assistant at Chicago, a run that included a bid to the 2017 NCAA Division III tournament. “I am grateful for this opportunity to be part of the Princeton Tiger family, part of a university and athletic department whose values closely align with my

own,” Davis said. “I would like to thank Coach Van Ackeren and the athletic department for this incredible opportunity to work among them. I can’t wait to get started. ”Prior to Chicago, Davis’ run at Southern Vermont included a 2014 season that saw the most wins in program history, a standard the team equaled in 2015, and the program’s first trip to the conference tournament. Alyssa graduated from Southern Vermont in 2012 with her BS Business Administration/Sports Management. In April 2016, she was inducted into the Southern Vermont College/Saint Joseph College Athletics Hall of Fame.



**Megan Durocher '08**

On October 1, 2019 **Megan Durocher** celebrated her one-year anniversary working for the Council on Aging in St. Johnsbury, Vermont. She serves the agency as the Director of Care and Support Services, supervising three departments. Those staff members work directly with older Vermonters in the community. Megan participates in local and state meetings, works with community partners to provide the best collaborative supports, and advocates for and with older Vermonters. She also works jointly with her staff to continue to learn what’s important to the people they serve, and help to uphold

their decisions to live life the way they want, and where they want. Having earned her master’s degree in Psychology at age 23, Megan is proud to say that before age 30 she has obtained a supervisory position contributing to such an important mission.

**Kathy (Berry) and Nate Griffith** were united in marriage on August 3, 2019.

2009

**Nykea Williams** and Jeremie Kerstetter welcomed a daughter on July 3, 2019. She joins a sister, Jayden.



**Nykea Williams '09 and family**

**Mallory (Jacob) and Joe Walsh** were united in Marriage on June 22, 2019. Mallory had many alumni bridesmaids, including: Erin Grout '09, Jillian Tanych '09, Josephine Jacob '11, Lynzy Guyer '09, and Anna (Amodeo) Young '09.



**Luke Keithan '03, Megan Davis '10 & family**



2010

**Megan Davis and Luke Keithan '03**, welcomed a son, Waylon Thomas Keithan on March 15, 2019. He joins a sister, Adelynn.

**Krysta Young and Brandon Gochie '13** welcomed a daughter, Charlotte Leona Gochie on April 1, 2019. She joins sisters, Olivia Gochie and Natalie Adams.

2012

**Rohan Racine** was the 2019 Commencement Speaker for the eighth grade graduation ceremonies at The Riverside School in Lyndonville, Vermont. Rohan attended Riverside and graduated in 2008. After LI he attended Tufts University and graduated with a bachelor's degree in Chemistry and Economics. He is furthering his education at McGill University pursuing a master's degree in Experimental Surgery.

**Andrew Riendeau** and Rachel (Brooks) were united in marriage on June 23, 2019.



**Mr. and Mrs. Andrew Riendeau '12**  
Photo credit: Constance Haines Photography

**Darien Smith** announces the birth of her daughter, Leora Piper (named after her great-grandmother Leora Thompson Dunphy '59) on August 16, 2019. She joins a brother, Dax.



**Darien Smith's '12 daughter, Leora**

2014

**Logan Croft** and wife, Hannah, welcomed a son, Jameson Anthony Croft on July 14, 2019.

2015

**Dylan Brink** and Nikki Roy welcomed a son, Cayden Joseph Brink on August 16, 2019. He joins siblings, Damian and Draven Brown and Neveah Brink.

**Samantha Smith** graduated from Norwich University in May of 2019 with a BS in Nursing.

2016

**Jed Stevens** is currently attending Montana State University pursuing a career in finance. He is also a Sales Development Representative at Foundant Technologies and was recently featured as a new team member in the Grantseekers Newsletter in August.



**Jed Stevens '16**

## Shop to Support LI!

You can support LI students, programs and facilities when you shop!



Lyndon Institute participates in the AmazonSmile program, where Amazon donates 0.5% of the price of eligible Amazon Smile purchases to the charitable organizations selected by their customers. Visit [smile.amazon.com](https://smile.amazon.com) to shop Amazon Smile and support LI!

Additionally, remember to visit our online store for official Lyndon Institute gear. Visit <https://www.lyndoninstitute.org/campus-life/school-store> to show your support no matter where you are located. We still have the on campus store in Thompson Cottage which is open Monday – Friday 8:00 am – 4:00 pm.

# *In Memoriam*



**Majorie (Stahler) Zamoic '40** of Meriden, Connecticut on March 21, 2019



**Ina Mae (Lang) DeWitt '50** of Lebanon, New Hampshire on August 12, 2019



**Audrey (Hartwell) Batchelder '59** of East Burke, Vermont on April 18, 2019



**Armand J. Hebert '41** of Lyndonville, Vermont on May 14, 2019



**Ann (Watkins) Somers '52** of Barre, Vermont on August 15, 2019



**Richard J. Welch '59** of East Burke, Vermont on April 30, 2019



**Marvel (Ash) Kittredge '47** of St. Johnsbury, Vermont on October 28, 2018



**Beverly (Tanner) Beliveau '52** of St. Johnsbury, Vermont on June 20, 2019



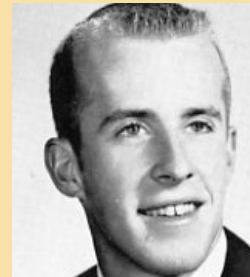
**Kenneth I. Stevens '60** of Wyanantskill, New York on July 14, 2019



**Conrad Doyon '48** of St. Johnsbury, Vermont on June 18, 2019



**Carleta (Bandy) Legacy '53** of East Burke, Vermont on June 7, 2019



**Thomas G. Keppel '61** of Herndon, Virginia on July 16, 2019



**Evelyn (Walker) Lussier '48** of Lyndonville, Vermont on May 29, 2019



**Mary (Shattuck) Tebbetts '54** of Marshfield, Vermont on February 26, 2019



**Eileen (Easterbrooks) Coulter '63** of Dalton, New Hampshire on July 21, 2019



**Kenneth E. Amadon '48** of Orleans, Vermont on May 20, 2019

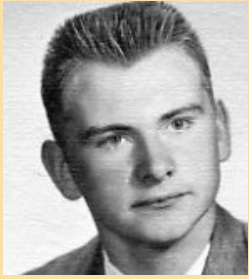


**Clara (Willey) Johnson '55** of Sutton, Vermont on April 6, 2019



**Everett N. Blodgett '64** of Lyndonville, Vermont on June 22, 2019





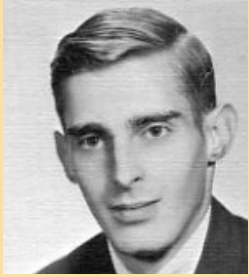
**David F. Emery '67** of Kirby, Vermont on August 7, 2019



**Janet (Morey) Reed '69** of Craftsbury Common, Vermont on December 16, 2018.



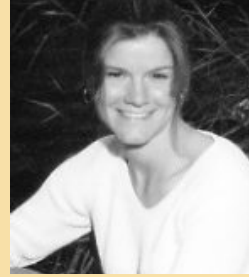
**Lisa (Abbey) Williamson '87** of Lyndonville, Vermont on July 18, 2019.



**Raymond D. Simons '67** of West Burke, Vermont on December 22, 2018



**Randy G. Friend '70** of Sutton, Vermont on March 24, 2019.



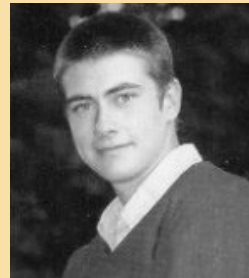
**Cheryl L. Williamson '98** of St. Johnsbury, Vermont on July 30, 2019.



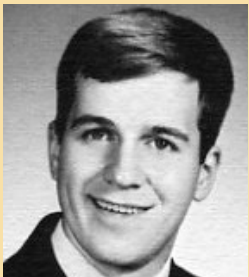
**Brenda (Harris) Demetrules '68** of Sutton, Vermont on August 18, 2019



**Audrey (Switser) Hearne '70** of Sheffield, Vermont on August 17, 2019.



**Anthony R. Corrow '06** of Lyndonville, Vermont on August 22, 2019.



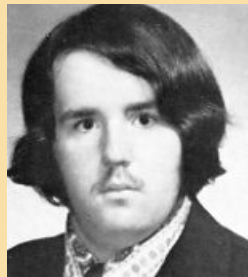
**Timothy C. Daley '68** of Lyndonville, Vermont on March 4, 2019



**Susan (Gray) Friend '73** of Sutton, Vermont on March 19, 2019.



**Janet (Morey) Reed '69** of Craftsbury Common, Vermont on December 16, 2018



**John L. Liberty '75** of Wheelock, Vermont on March 13, 2019.



**Wayne W. Fuller '69** of Hanson, Kentucky on November 11, 2018.



**Alice (Lawson) Doyon '85** of Lyndonville, Vermont on April 22, 2019.





# Lyndon INSTITUTE

PO Box 127  
168 Institute Circle  
Lyndon Center, Vt 05850

Change Service Requested

## Go Vikes Day

